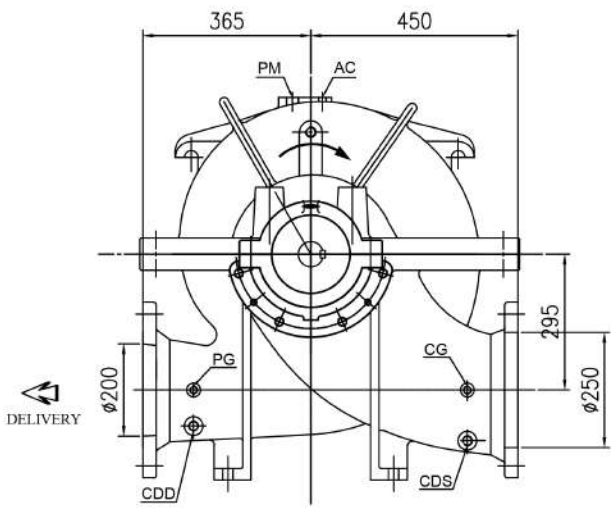
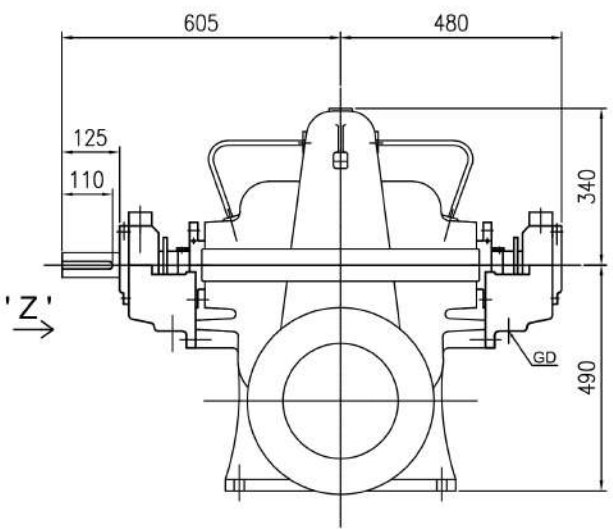
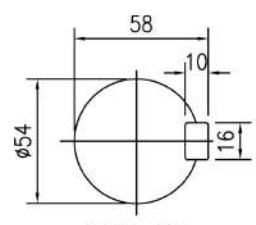


PUMP MODEL - 8HF17

GENERAL ARRANGEMENT DRAWING FOR SINGLE STAGE AXIALLY SPLIT CASE PUMP MODEL - 8HF17

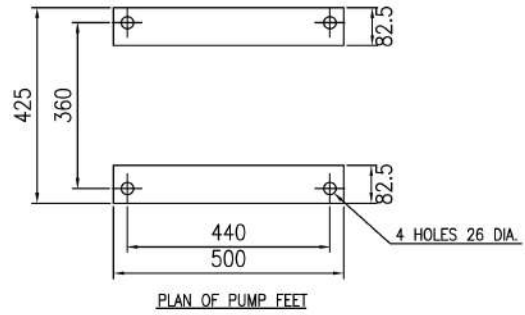


CLOCK-WISE ROTATION  
LOOKING FROM DRIVE END



SCALE - 5:1  
SHAFT DETAIL AT  
COUPLING END

VIEW IN DIRECTION OF ' Z '



PLAN OF PUMP FEET

APPROX. NET WEIGHT - 615kg.  
ALL DIMENSIONS ARE IN MM.

**FISHER PUMP**

CONNECTION		
ITEM	DESCRIPTION	SIZE(NPT)
GD	GLAND DRAIN	3/4"
CG	COMPOUND GAUGE FOR SUCTION	3/8"
PG	PRESSURE GAUGE FOR DELIVERY	3/8"
AC	AIR COCK	1/2"
PM	PRIMING	1"
CDS	CASING DRAIN(SUCTION SIDE)	3/4"
CDD	CASING DRAIN(DELIVERY SIDE)	3/4"

\*\* GAUGE CONNECTIONS DRILLED AND TAPPED ONLY  
WHEN SPECIFICALLY REQUESTED BY THE CUSTOMER.

S	PN 16	405	355	26	12, Ø26														
D	PN 16							340	295	24	12, Ø22								
	TYPE OF FLANGE	O.D.	P.C.D.	THK MIN	NO. SIZE OF HOLE	RF	ØRF. THK RF FLANGE	O.D.	P.C.D.	THK MIN	NO. SIZE OF HOLE	RF	ØRF. THK RF FLANGE	SUCTION - Ø250					
								DELIVERY - Ø200						REV					

REV	DESCRIPTION	TOLLERANCE	DRN	CHKD

TITLE - GA. DRG. FOR 8HF17		<small>REVISION HISTORY</small> <small>REV. NO. DATE</small> <small>APPD. DESIGNED BY</small> <small>DATE</small>		
DRG. NO. PSF/8HF17/GA-01	8142640	DRN	AD 04.04.16	
		CHKD	SP 04.04.16	SCALE 1:1
		APPD	HS 04.04.16	REV 0