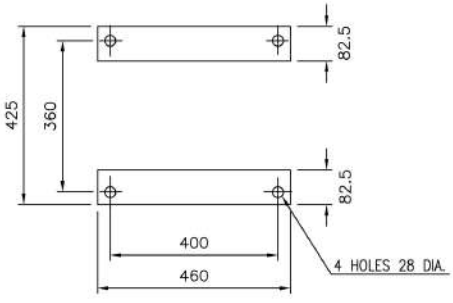
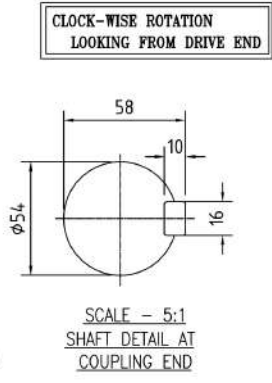
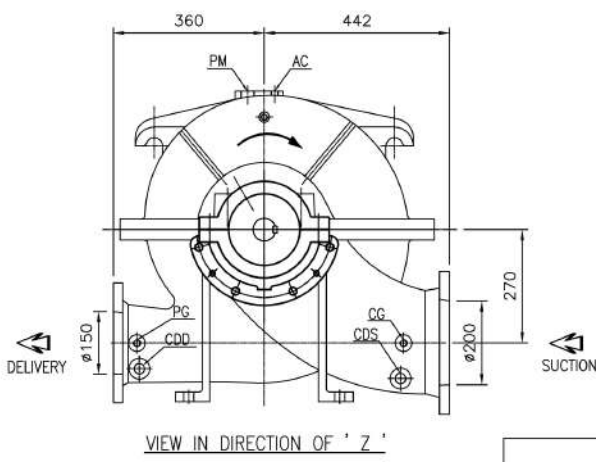
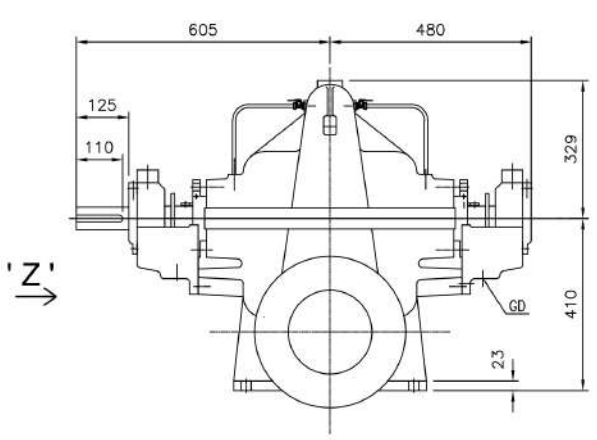


PUMP MODEL - 6HF18

GENERAL ARRANGEMENT DRAWING FOR SINGLE STAGE AXIALLY SPLIT CASE PUMP MODEL - 6HF18



APPROX. NET WEIGHT - 660kg.
ALL DIMENSIONS ARE IN MM.

FISHER PUMP

CONNECTION		
ITEM	DESCRIPTION	SIZE(NPT)
GD	GLAND DRAIN	3/4"
CG	COMPOUND GAUGE FOR SUCTION	3/8"
PG	PRESSURE GAUGE FOR DELIVERY	3/8"
AC	AIR COCK	3/8"
PM	PRIMING	1"
CDS	CASING DRAIN(SUCTION SIDE)	3/4"
CDD	CASING DRAIN(DELIVERY SIDE)	3/4"

** GAUGE CONNECTIONS DRILLED AND TAPPED ONLY WHEN SPECIFICALLY REQUESTED BY THE CUSTOMER.

PLAN OF PUMP FEET

S	PN 16	340	295	24	12, #22	—	—								
D	PN 16							285	240	22	8, #22	—	—		
REF. NO.	TYPE OF FLANGE	O.D.	P.C.D.	THK MIN	NO. SIZE OFF HOLE	RF THK	RF FLANGE	O.D.	P.C.D.	THK MIN	NO. SIZE OF HOLE	RF THK	RF FLANGE		
		SUCTION - Ø200						DELIVERY - Ø150							

REV	DESCRIPTION	TOLLERANCE	DRN	CHKD

TITLE- GA DRG. FOR 6HF18		<small>FACTORY ADDRESS: M. Srinivas, G.P. Colony, Maddurpet Road, High School, Kannur - 711112</small>		SCALE 1:1
DRG. NO. PSF/6HF18/GA-01	810264C	DRN AD	04.04.16	
		CHKD SP	04.04.16	REV 0
		APPD HS	04.04.16	