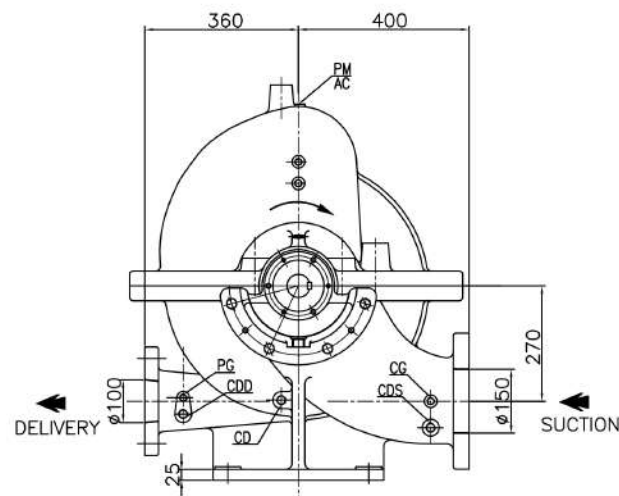
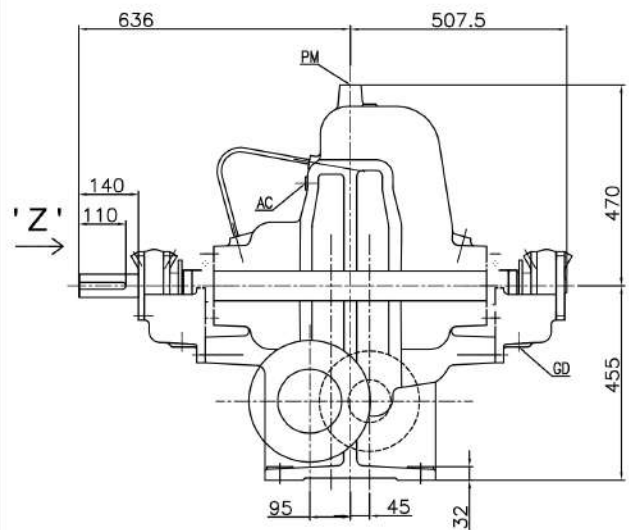
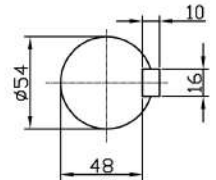


PUMP MODEL- 4HFT19

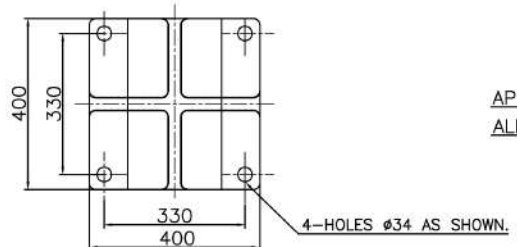
GENERAL ARRANGEMENT DRAWING FOR TWO STAGE AXIALLY SPLIT-CASE PUMP MODEL - 4HFT19



CLOCK WISE ROTATION  
LOOKING FROM DRIVE END



SCALE-4:1  
SHAFT DETAIL AT  
COUPLING END



DETAIL OF PUMP FEET

APPROX. NETT WEIGHT - 725kg.  
ALL DIMENSIONS ARE IN MM.

CONNECTIONS		
ITEM	DESCRIPTION	SIZE(NPT)
GD	GLAND DRAIN	3/4"
CG	COMPOUND GAUGE FOR SUCTION	3/8"
PG	PRESSURE GAUGE FOR DELIVERY	3/8"
AC	AIR COCK	3/8"
PM	PRIMING	1/2"
CDS	CASING DRAIN(SUCTION SIDE)	1/2"
CDD	CASING DRAIN(DELIVERY SIDE)	1/2"

S	PN 16	285	240	22	8, #22								
D	PN 16					220	180	20	8, #18				
REF. NO.	TYPE OF FLANGE	O.D.	P.C.D.	THK MIN	NO. SIZE OFF HOLE	RF THK	RF FLANGE	O.D.	P.C.D.	THK MIN	NO. SIZE OFF HOLE	RF THK	RF FLANGE
		SUCTION - $\phi$ 150				DELIVERY - $\phi$ 100							

PROJECT NAME-				JOB NO.-			
<b>FISHER PUMP</b>							
TITLE							
GA DRG. FOR 4HFT19(CW)							
DRN AS 12.04.13 DRG. NO.							
CHKD AS 12.04.13 PSF/4HFT19/GA-01							
APPD HS 12.04.13							
REV	DESCRIPTION			DRN	CHKD	APPD	HS

