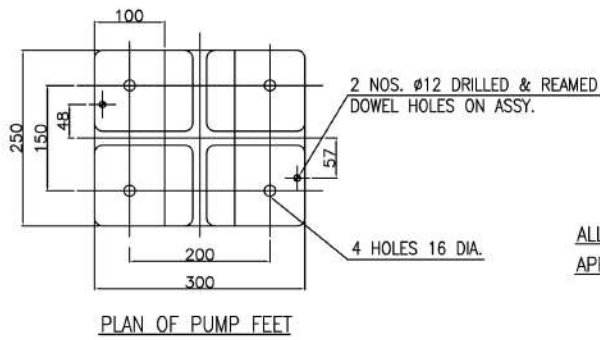
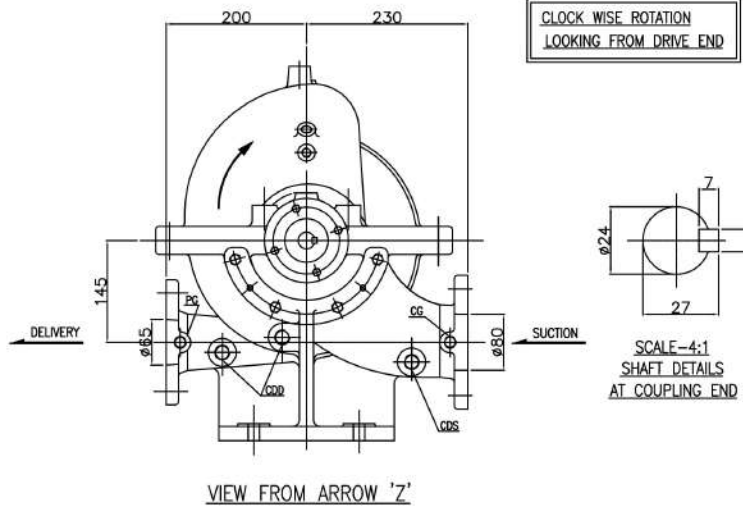
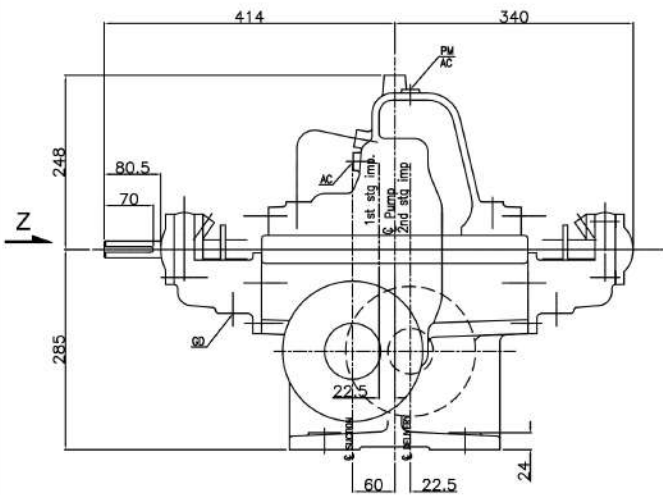


PUMP MODEL - 2.5HST9

GENERAL ARRANGEMENT DRAWING FOR TWO STAGE AXIALLY SPLIT-CASE PUMP MODEL - 2.5HST9



ALL DIMENSIONS ARE IN MM.  
APPROX. NETT WEIGHT - 245Kg.

CONNECTIONS		
ITEM	DESCRIPTION	SIZE(NPT)
GD	GLAND DRAIN	1/2"
CG	COMP. GAUGE FOR SUCTION	3/8"
PG	PR. GAUGE FOR DELIVERY	3/8"
AC	AIR COCK	1/4"
PM	PRIMING	1/4"
CDS	CASING DRAIN (SUCT.SIDE)	1/2"
CDD	CASING DRAIN (DELY.SIDE)	1/2"

PLAN OF PUMP FEET

SUC	PN 16	200	160	20	8, Ø18										
DIS	PN 16						185	145	18	4, Ø18					
REF. NO.	TYPE OF FLANGE	OD.	PCD.	THK. MIN.	NO. SIZE OF HOLE	RF. Ø	RF. THK	RF. FLANGE	OD.	PCD.	THK. MIN.	NO. SIZE OF HOLE	RF. Ø	RF. THK	RF. FLANGE
		SUCTION - Ø80						DELIVERY - Ø65							

REV	DESCRIPTION	DRN	CHKD	DATE	APPD	AD	SF	DRG. NO.	SCALE
						15.03.15	15.03.15	PS/2.5HST9/GA-01	1:1
						15.03.15	15.03.15		REV 0

PROJECT NAME - **FISHER PUMP** JOB NO. -

TITLE - **GA DRG. FOR 2.5HST9(CW)** SCALE 1:1

DRN AD 15.03.15 DRG. NO. PS/2.5HST9/GA-01

CHKD SF 15.03.15

APPD 15 15.03.15