

NOTE- PERFORMANCE AS PER ISO 9906 GRADE-2B

PERFORMANCE CURVE OF ESL 350-350 @1480 R.P.M

ESL 350-350/Y/406654

FISHER PUMP

ESL RANGE

MODEL ESL 350-350

WORKING PRESS. 16 bar

SIZE 350x350-322

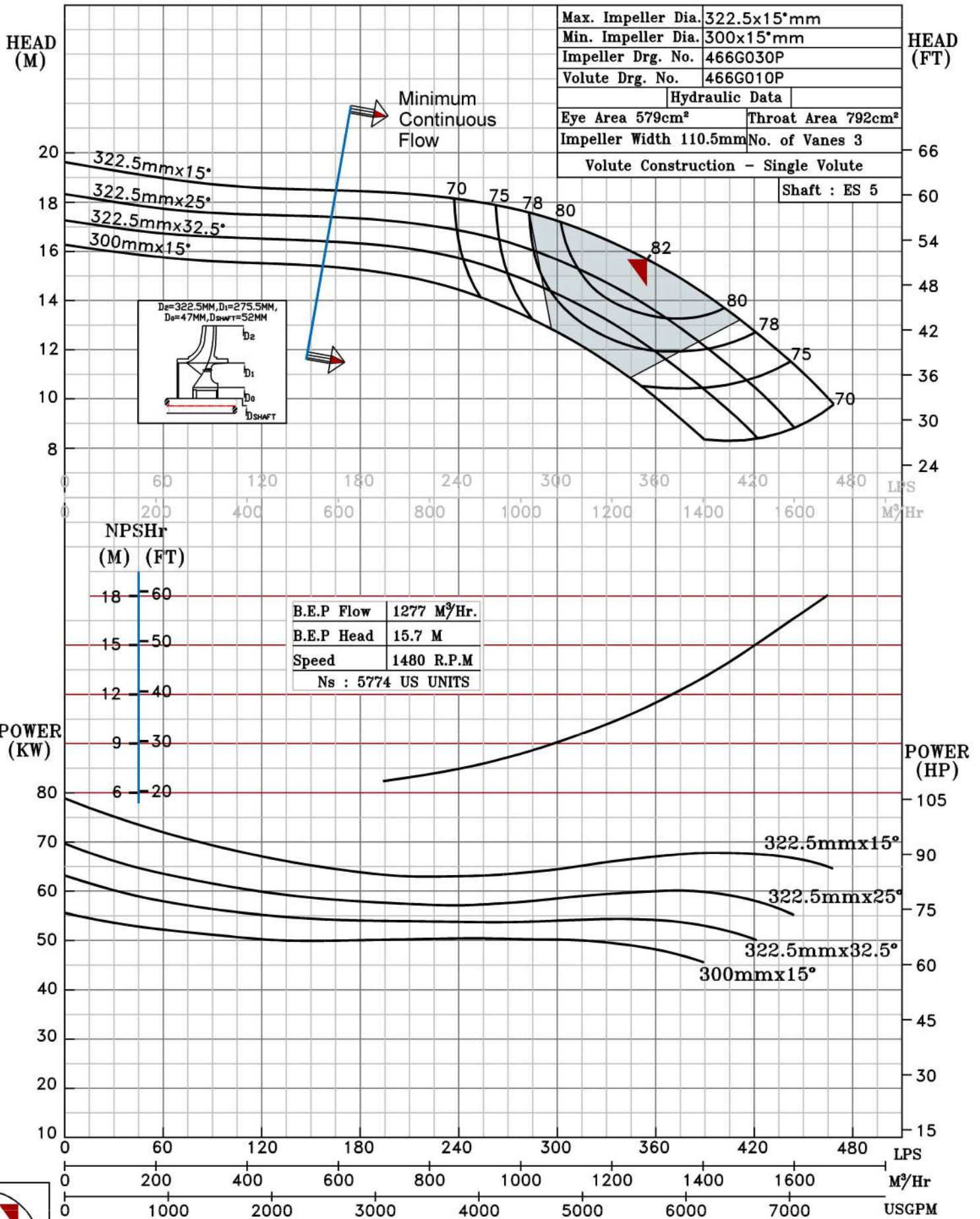
TEST PRESS. 24 bar

TYPE - END SUCTION BACK PULL OUT

SPEED 1480 rpm

SHADED REGION ON THE H-Q CURVE REPRESENTS OPTIMUM SELECTION ZONE

PUMP PERFORMANCE CHARACTERISTICS COMPUTED BASED ON CLEAN COLD WATER S.G 1.0



1480 RPM

