

NOTE- PERFORMANCE AS PER ISO 9906 GRADE-2B

PERFORMANCE CURVE OF ESL 250-500 @1480 R.P.M

ESL 250-500/Y/405654

FISHER PUMP

ESL RANGE

MODEL ESL 250-500 WORKING PRESS 16 bar

SIZE 300x250-515 TEST PRESS. 24 bar

TYPE - END SUCTION BACK PULL OUT

SPEED 1480 rpm

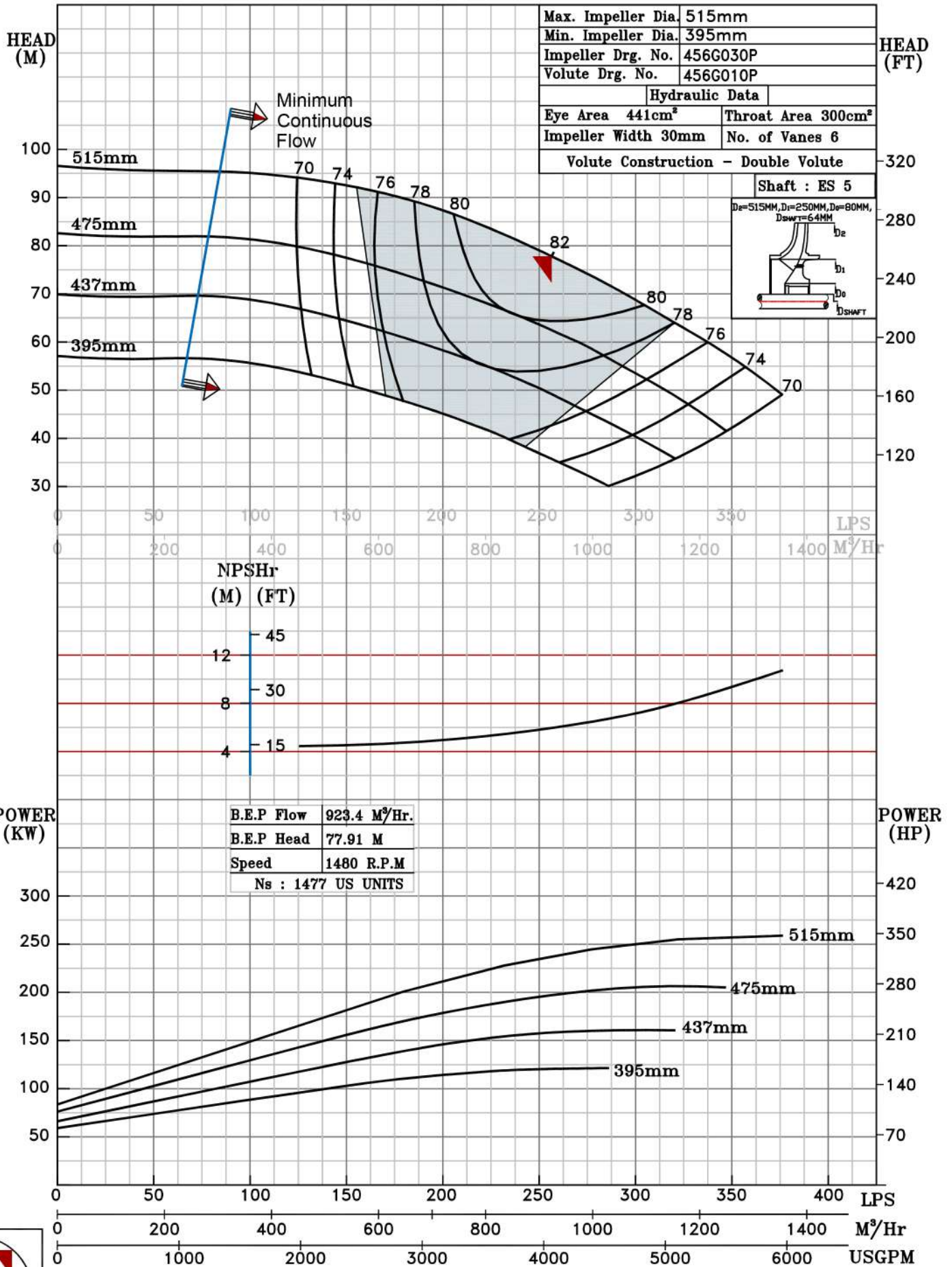
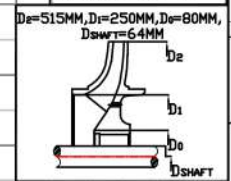
SHADED REGION ON THE H-Q CURVE REPRESENTS OPTIMUM SELECTION ZONE

PUMP PERFORMANCE CHARACTERISTICS COMPUTED BASED ON CLEAN COLD WATER S.G 1.0

Max. Impeller Dia.	515mm
Min. Impeller Dia.	395mm
Impeller Drg. No.	456G030P
Volute Drg. No.	456G010P

Hydraulic Data	
Eye Area	441cm ²
Throat Area	300cm ²
Impeller Width	30mm
No. of Vanes	6
Volute Construction - Double Volute	

Shaft : ES 5



NPSHr (M)	4
NPSHr (FT)	15
NPSHr (M)	8
NPSHr (FT)	30
NPSHr (M)	12
NPSHr (FT)	45

B.E.P Flow	923.4 M ³ /Hr.
B.E.P Head	77.91 M
Speed	1480 R.P.M
Ns	1477 US UNITS



1480 RPM