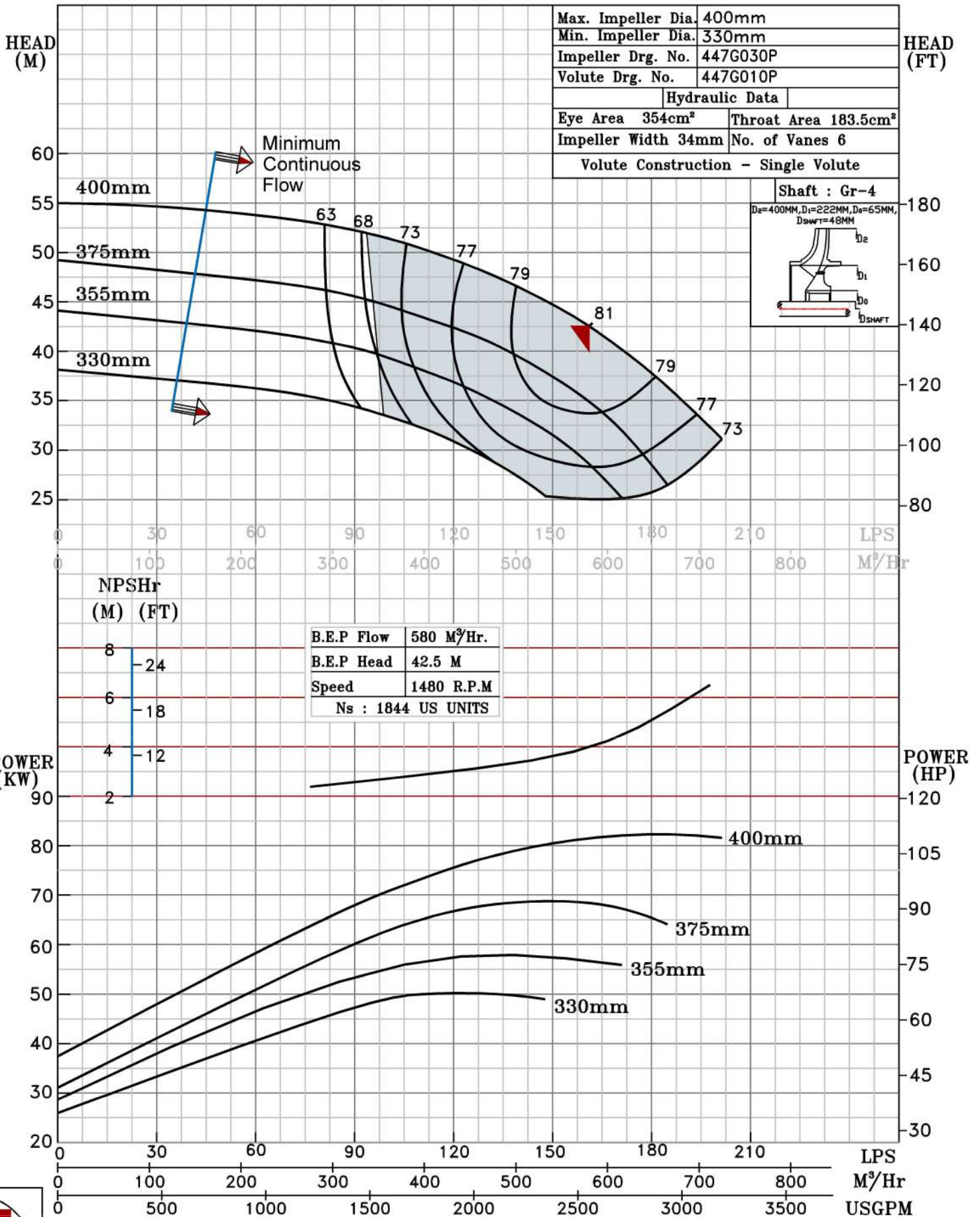


NOTE- PERFORMANCE AS PER ISO 9906 GRADE-2B

PERFORMANCE CURVE OF ESL 200-400 @1480 R.P.M		ESL 200-400/Y/404754	
<i>ESL RANGE</i>	MODEL ESL 200-400	WORKING PRESS.	16 bar
	SIZE 250x200-400	TEST PRESS.	24 bar
	TYPE - END SUCTION BACK PULL OUT		
SPEED 1480 rpm			

SHADED REGION ON THE H-Q CURVE REPRESENTS OPTIMUM SELECTION ZONE
 PUMP PERFORMANCE CHARACTERISTICS COMPUTED BASED ON CLEAN COLD WATER S.G 1.0



1480 RPM